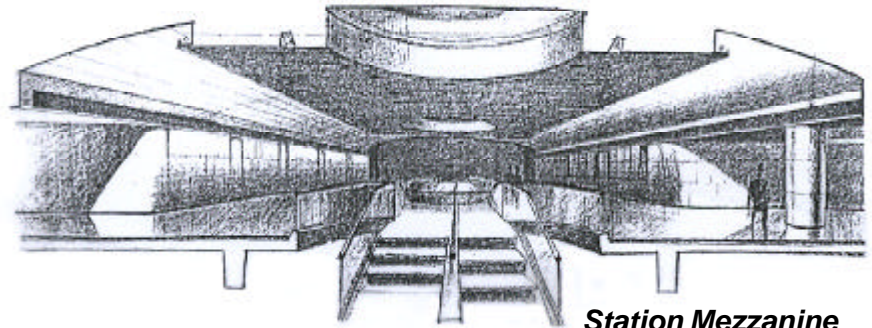


Allen Station, Eglinton West Subway

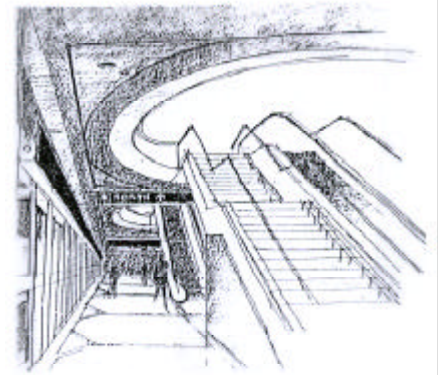
Allen station is the eastern terminal of the Eglinton West Subway providing transfer to the Spadina Subway as well as surface street buses. The station was to be part of a Rapid Transit Expansion Program funded by the Province of Ontario, Metropolitan Toronto and the Toronto Transit Commission.



Station Mezzanine

Allen station is the eastern terminal of the new Eglinton West Subway. It is a complicated three level underground structure that forms the transfer point between the Eglinton West Subway line and the Spadina Subway line. In 1993, the Toronto Transit Commission retained LEA as Prime Consultant for the design of this complex facility.

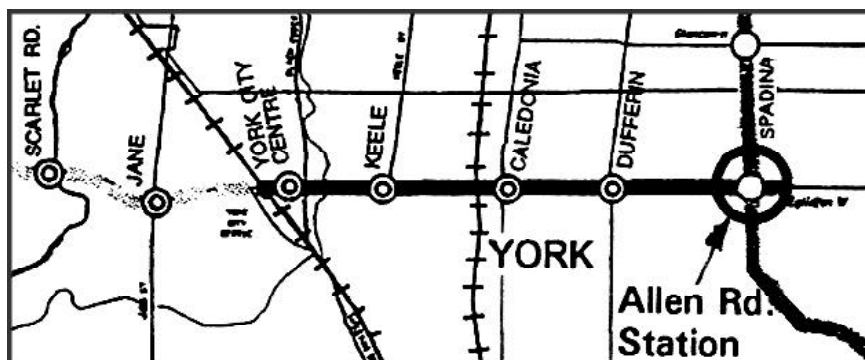
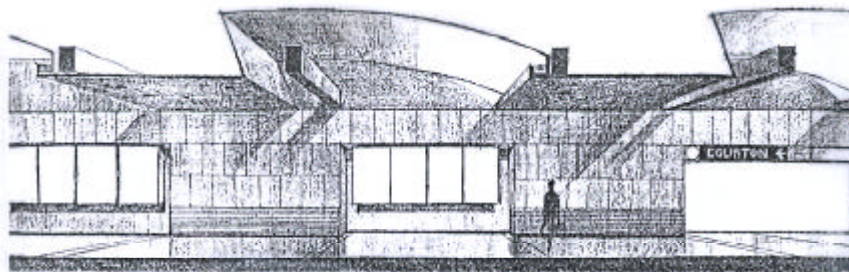
connect the mezzanine to the existing platforms which serve the Spadina Subway. From there passengers can travel to the surface via further stairs and escalators to street level where they can either exit the station or transfer to surface buses. A new entrance will be built on the south side of Eglinton Avenue to connect directly into the mezzanine.



Platform

The station will be constructed by cut-and-cover methods beneath one of the busiest traffic intersections in Toronto. The main box has the station platform and trainways at the lower level connected by escalators and stairs to an upper mezzanine. Two long underground passageways

The design also includes a new underground traction sub-station to serve the new subway. LEA were the project managers for the design of these facilities and were directly responsible for structural and civil designs, traffic management, costing, street restoration and utility relocations.



PROJECT SUMMARY

Client:
Toronto Transit Commission

Location:
City of Toronto, Canada

Services Provided:
**Project Management,
Preliminary and Detailed
Design**

Cost:
\$60 Million